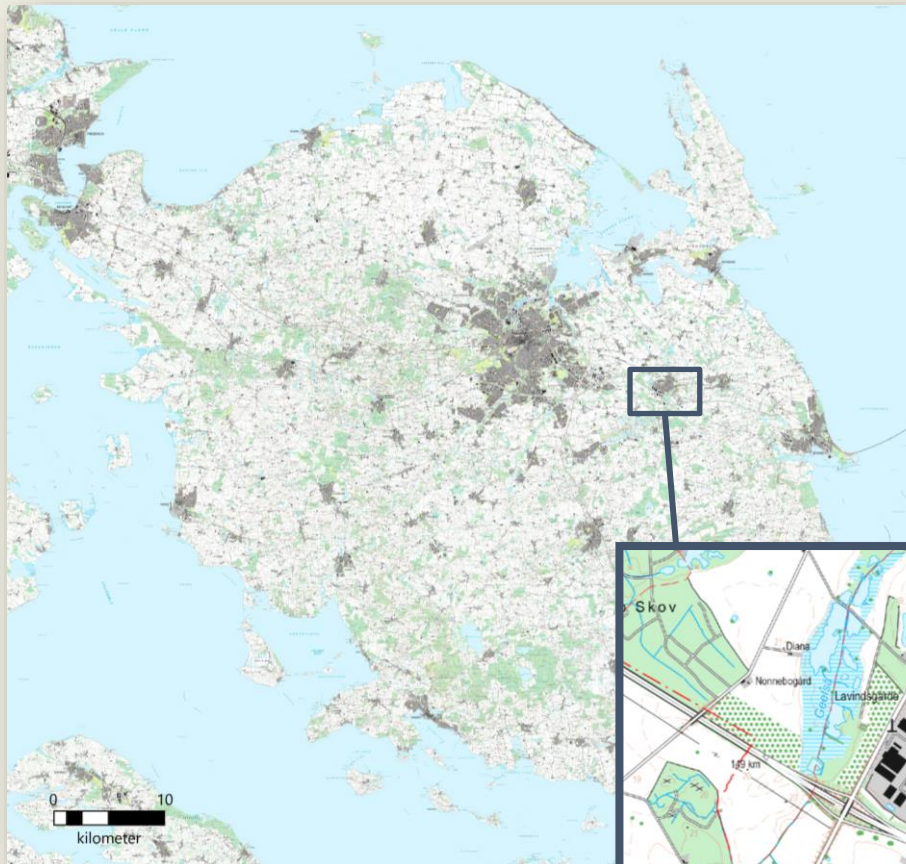


The cooking pit systems at Rønninge Søgård and Øksnebjerg

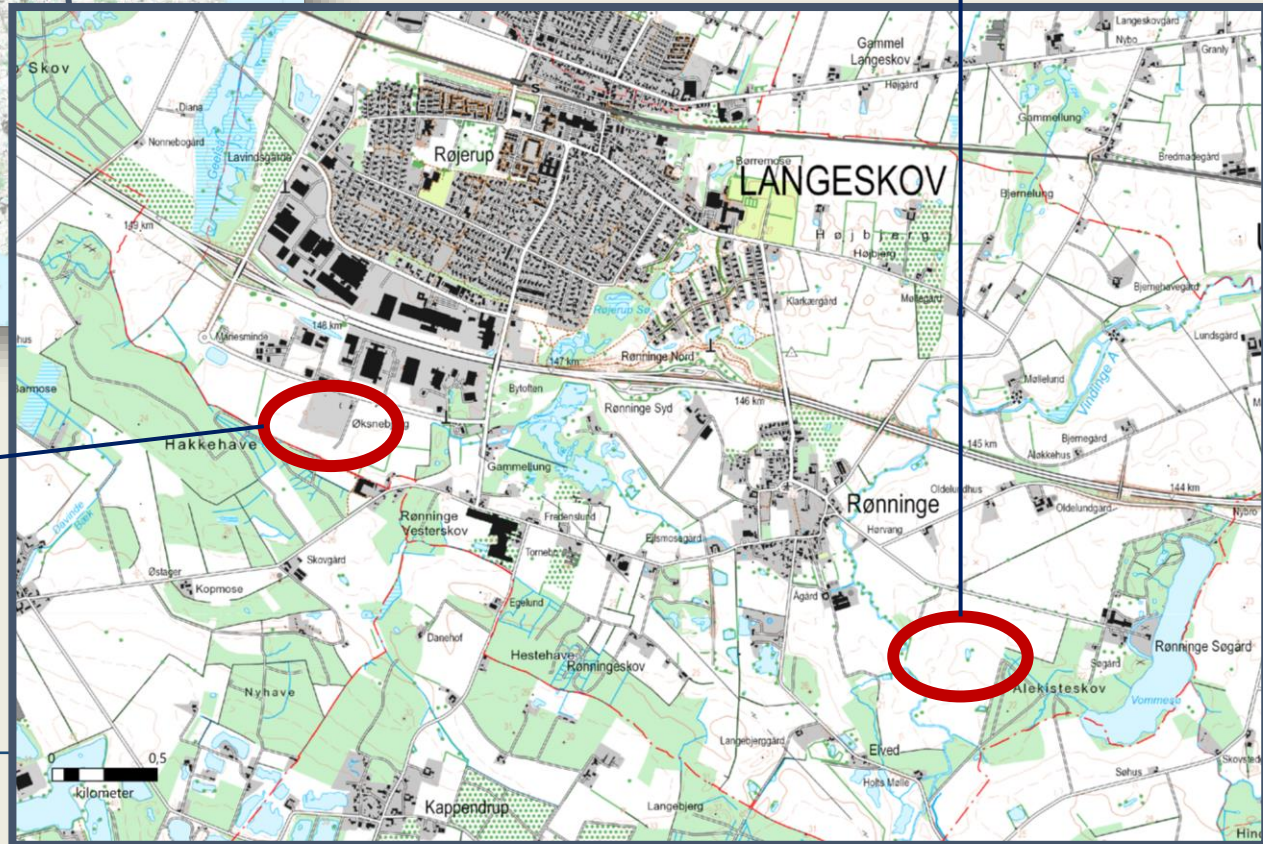
Organized vs. chaos ?





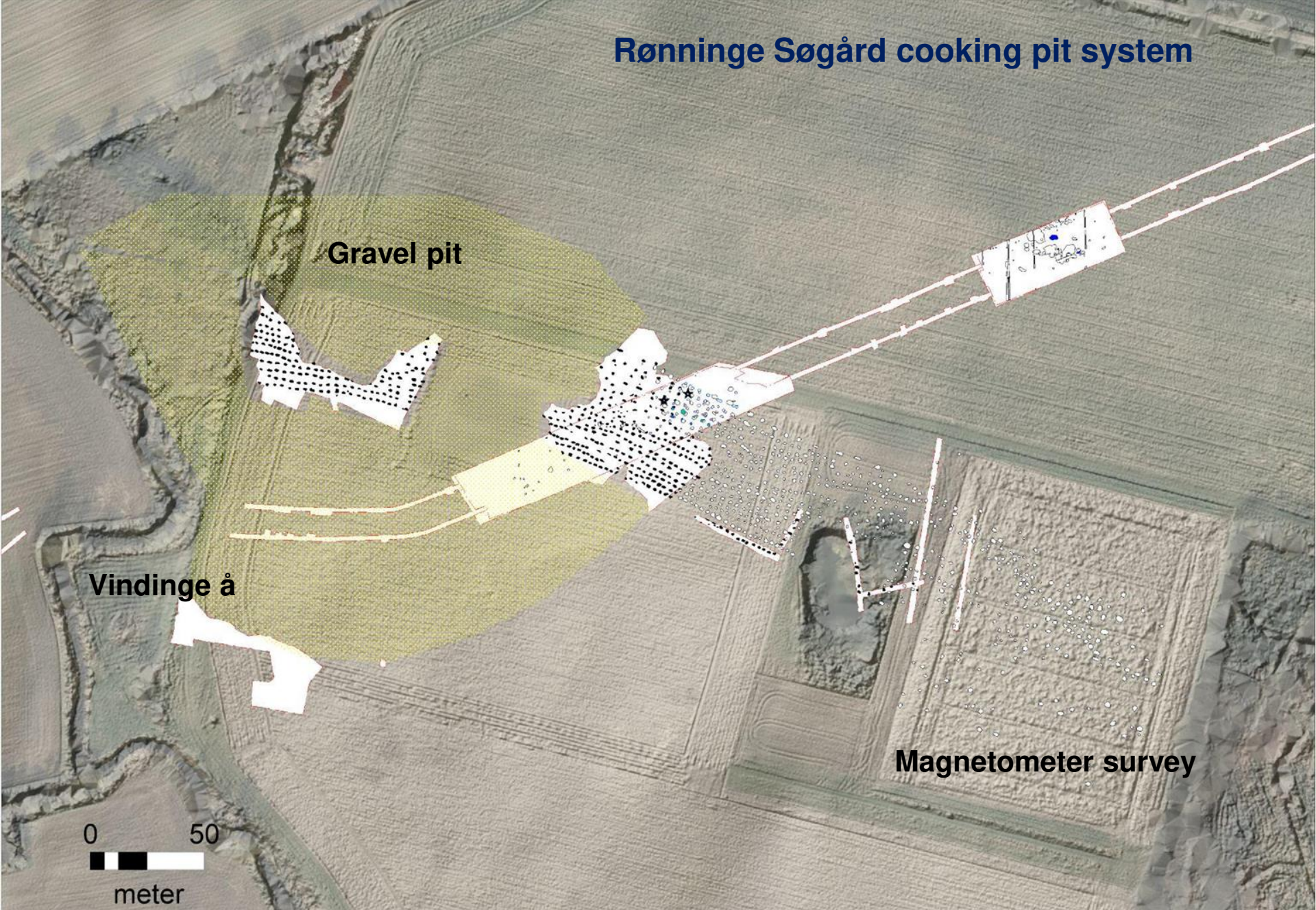
0 10
kilometer

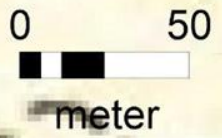
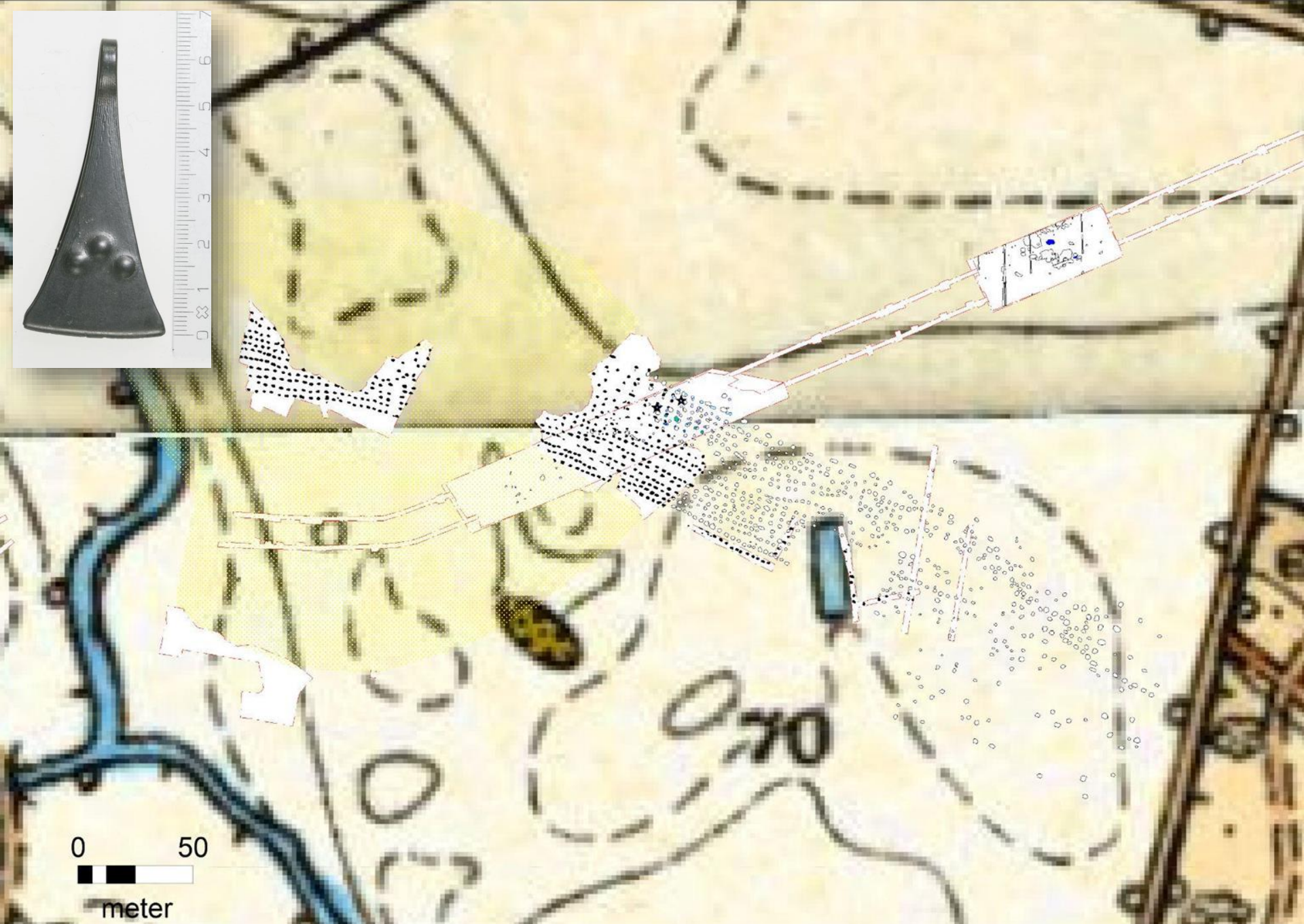
Rønninge Søgård



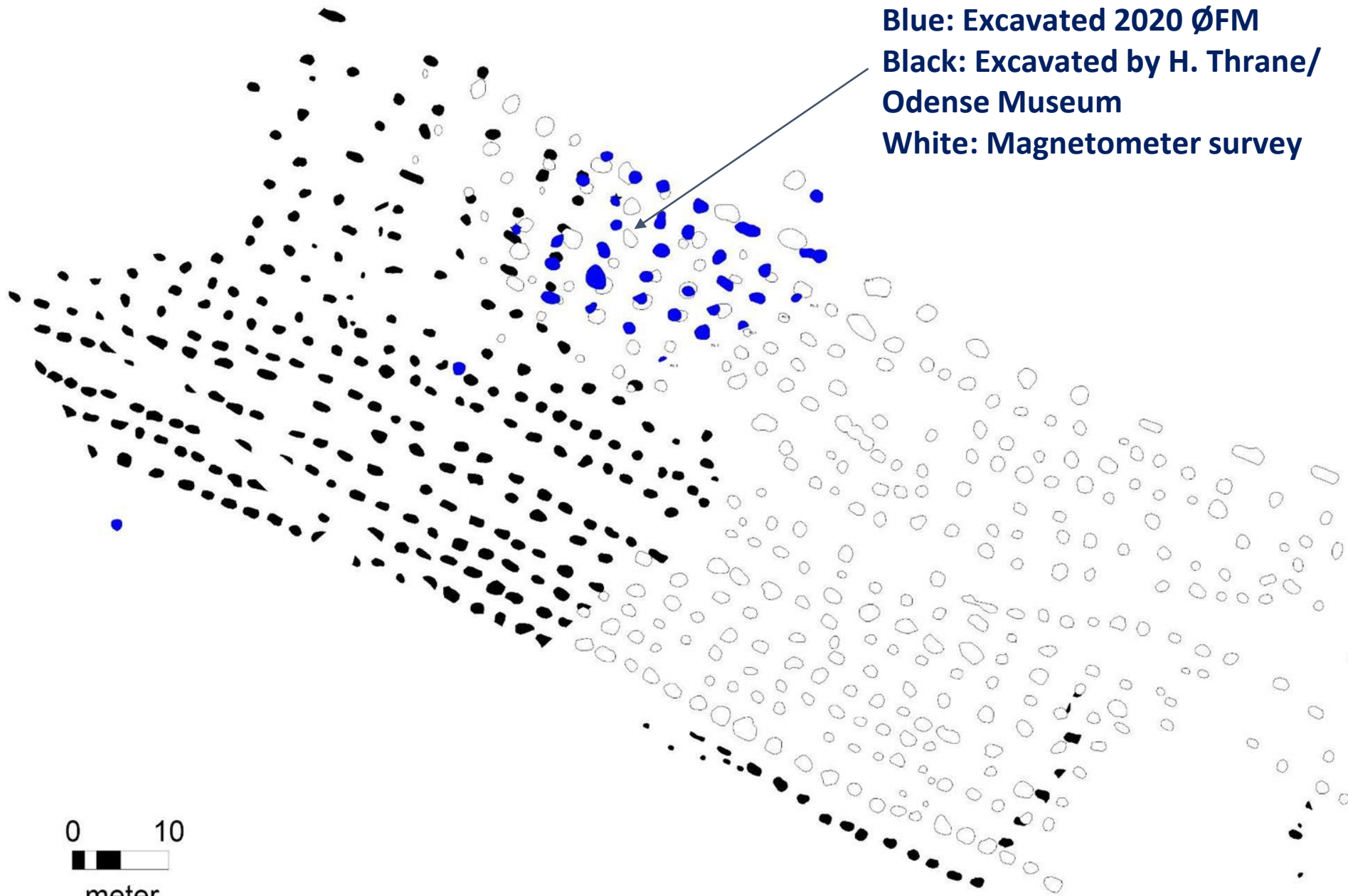
Øksnebjerg

Rønninge Søgård cooking pit system





Blue: Excavated 2020 ØFM
**Black: Excavated by H. Thrane/
Odense Museum**
White: Magnetometer survey



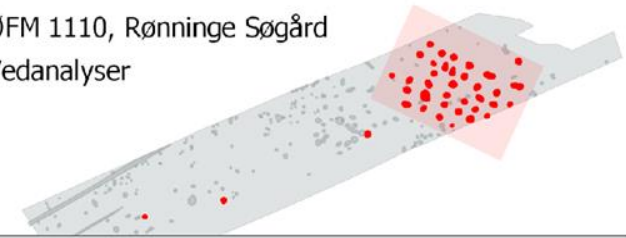
0 10
meter

Farvekoder for vedbestemmelser

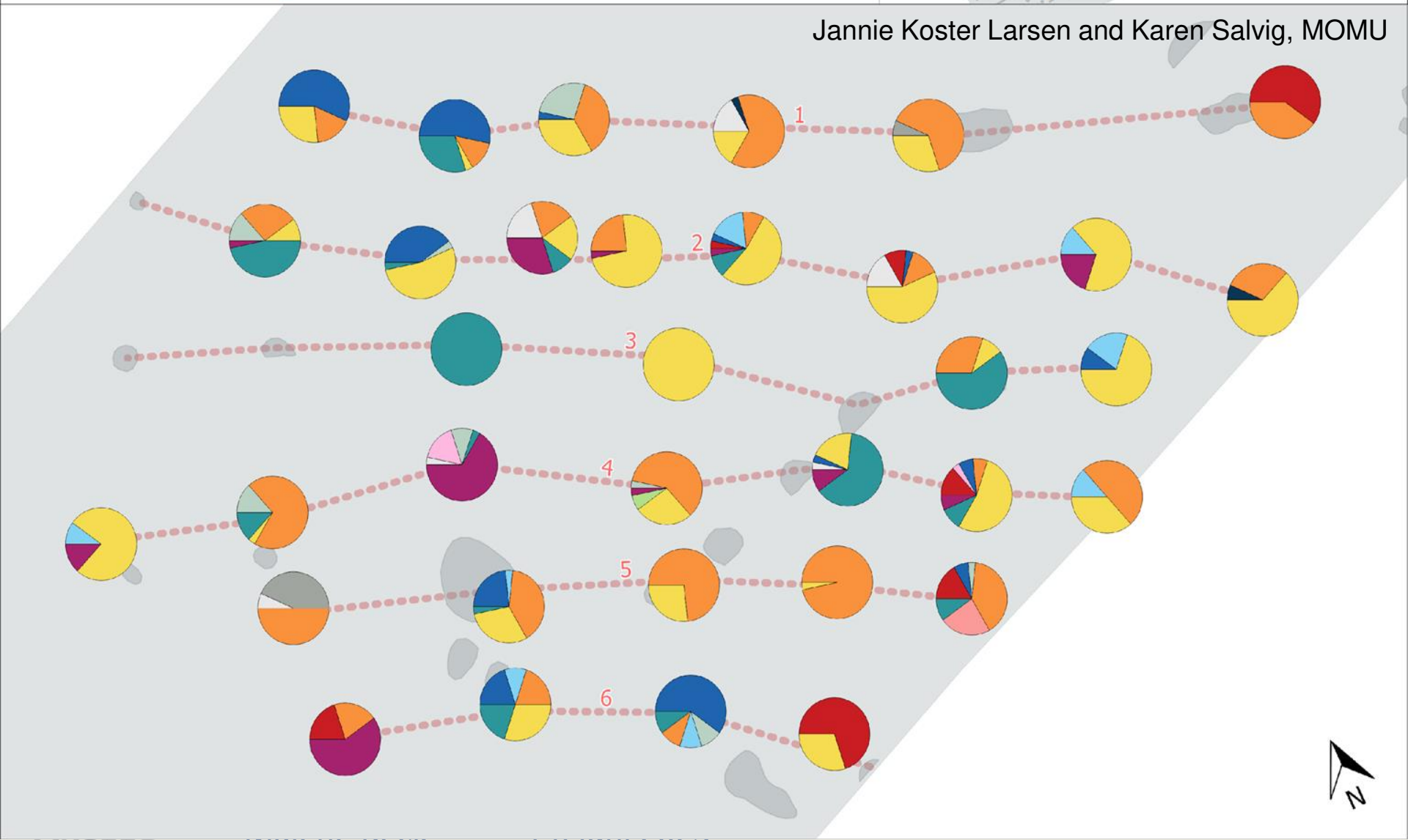
- Løn
- Ask
- Pil
- El
- Kernefrugt-fam.
- Lind
- Kornel
- Stenfrugt
- Elm
- Hassel
- Eg
- Usikre
- Tørst
- Vrietorn

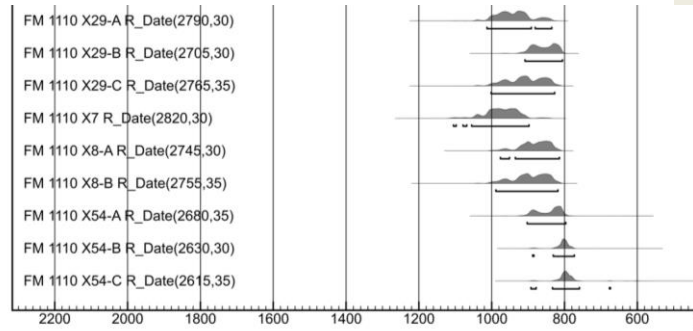
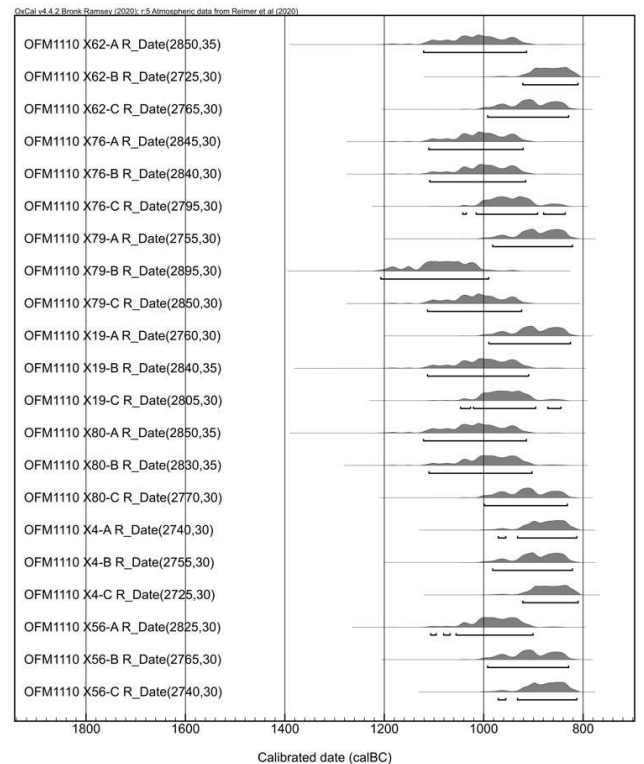
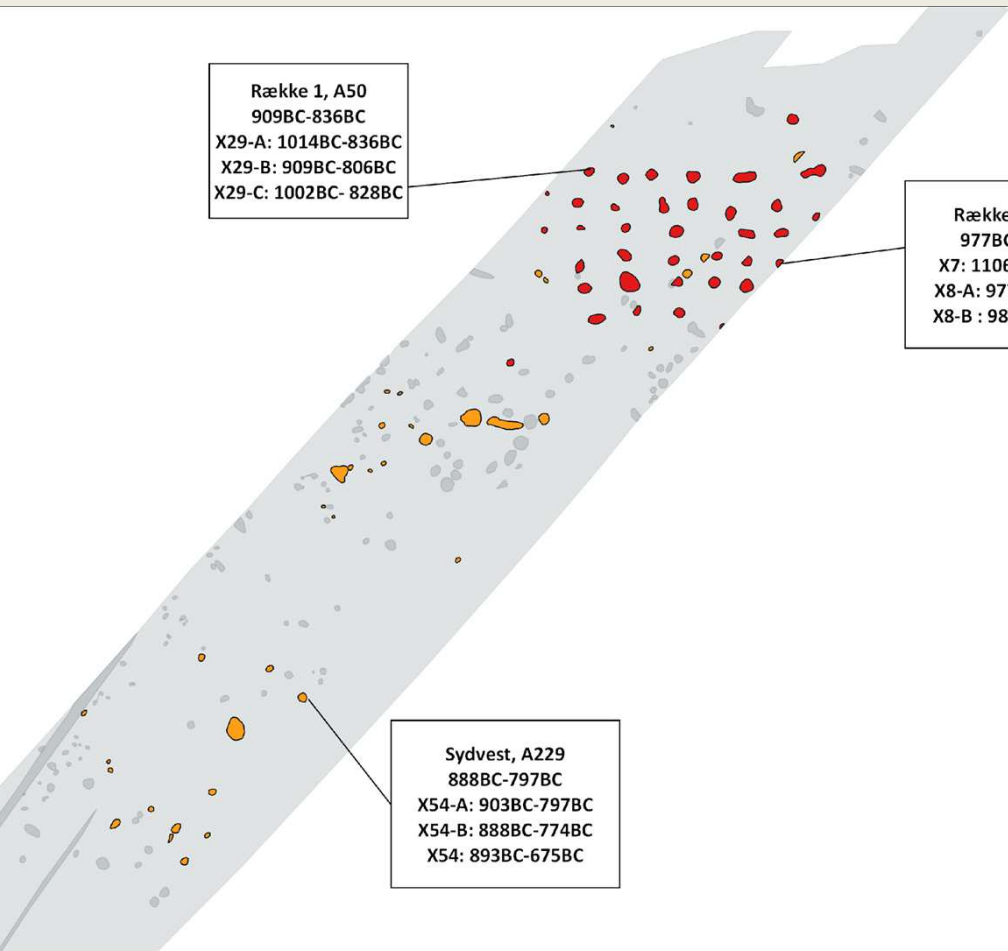
--- Kogestensgrube rækker

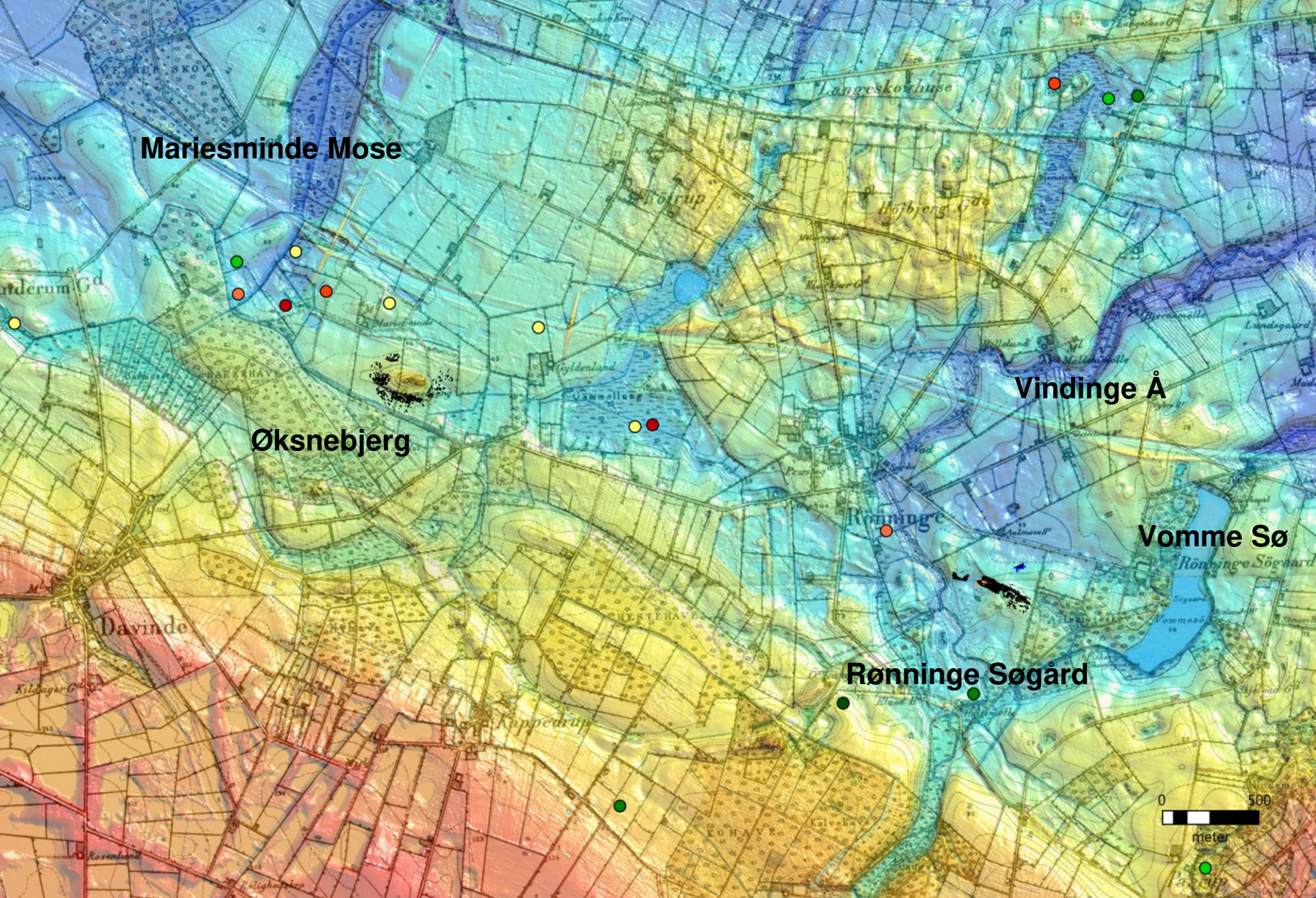
ØFM 1110, Rønninge Søgård
 Vedanalyser



Jannie Koster Larsen and Karen Salvig, MOMU







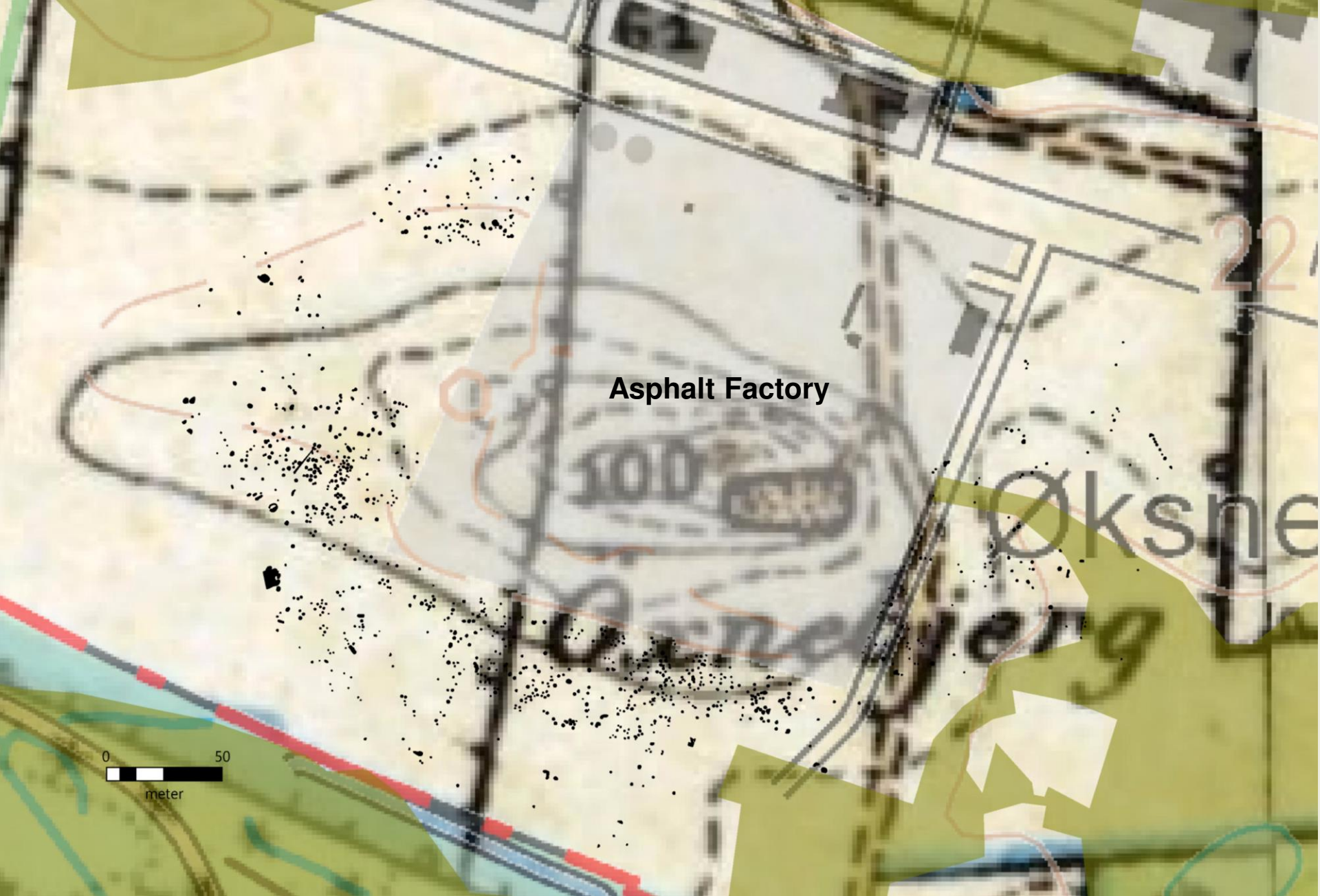
Mariesmilde Mose

Øksnebjerg

Vindinge Å

Vomme Sø

Rønninge Søgård

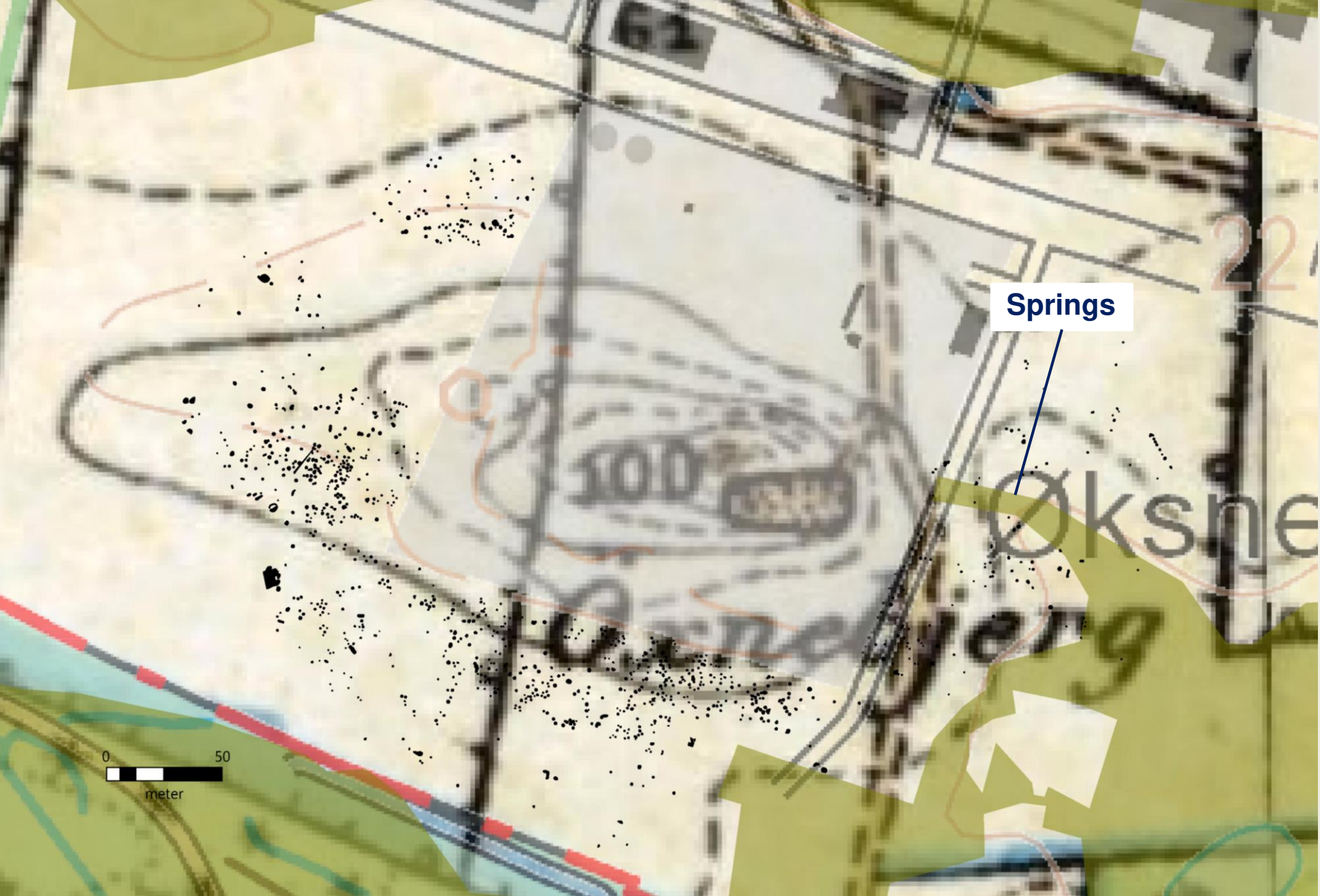


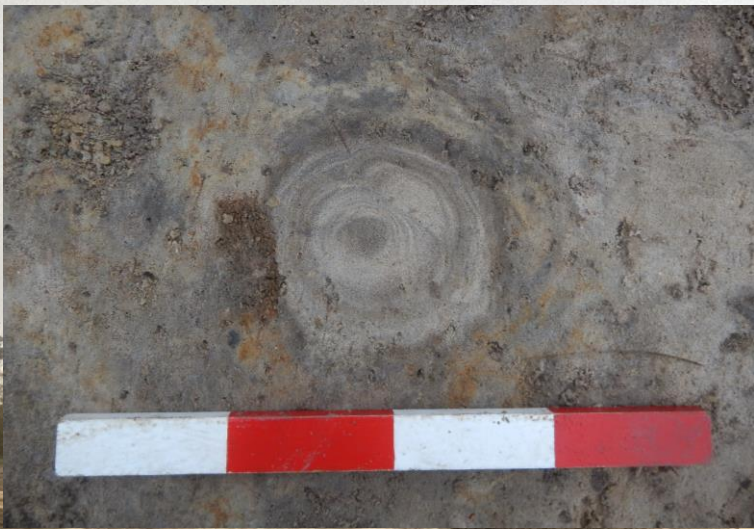
Asphalt Factory

0 50
meter



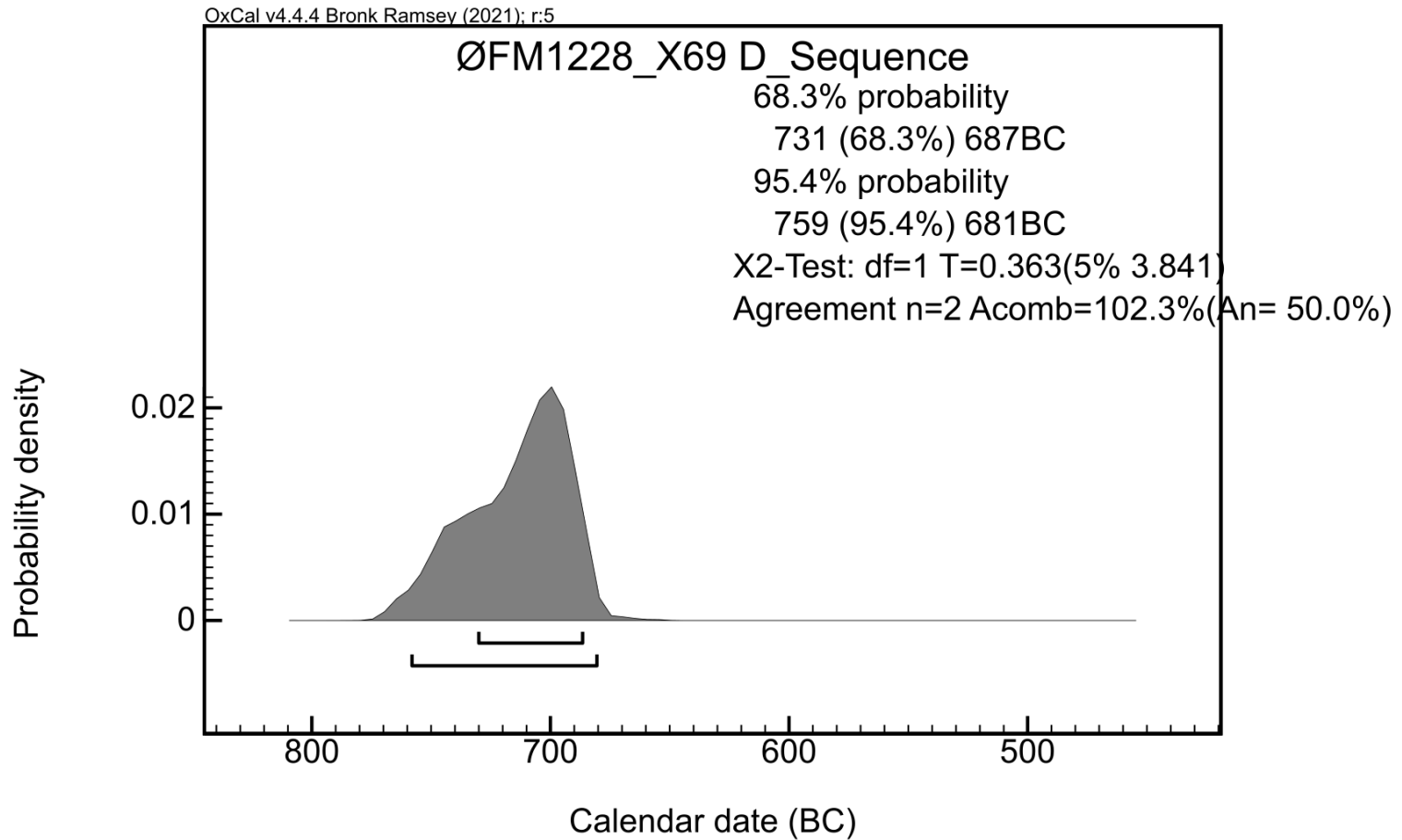








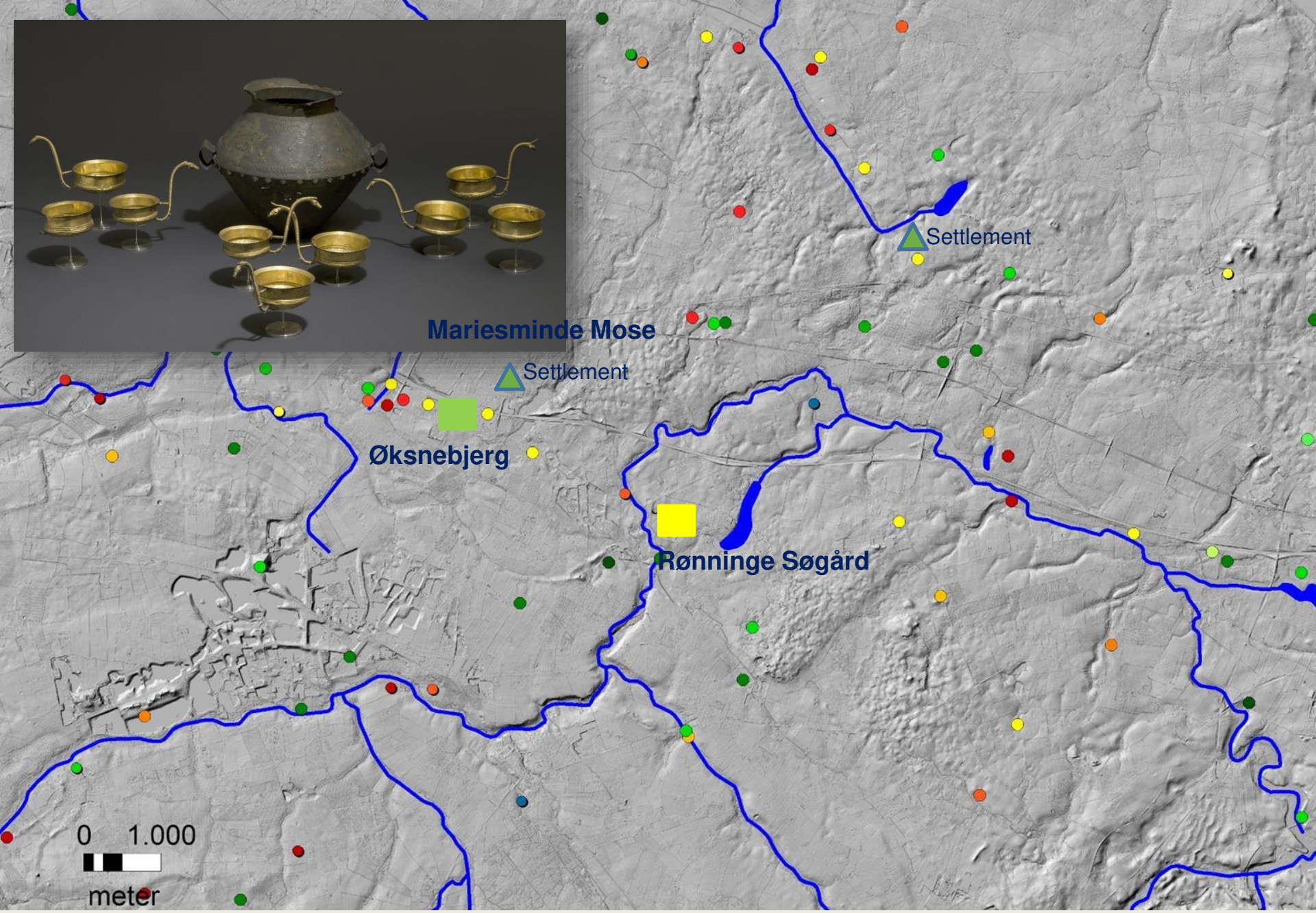
Alder trunk





Spring?





Mariesminde Mose

Settlement

Øksnebjerg

Rønninge Søgård

Settlement

0 1.000



meter

Differences

| Rønninge Søgård | Øksnebjerg |
|---|--|
| Organized? | Chaotic? |
| Systematic rows | Groups, lines, random? |
| Running through a landscape (guideline, procession) | Surrounding a landscape element (encircling) |
| Intensive use – short time (c. 200 years?) | Extensive use – long time (c. 1000 years?) |
| Metal find | No metal |
| Few large events? (Single event – every generation?) | Many smaller events? (Recurring events – every year?) |
| Connected to ?? Mariesminde I?? | Connected to metal depositions in the surrounding wetland areas? |
| No coeval activities or settlements within 3 km distance (Natural landscape?) | Settlement within 1 km distance (Cultural landscape?) |
| Many participants? | Few participants? |
| Regional? | Local? |

Similarities

Gathering places

Number of cooking pits

Great variation in cooking pit types

Use of the cooking pits?

Almost no finds (ceramic or zoo material)

Relation to springs?

Related to depositions in wetland areas?

Related to each other – but in what way?

Do the different types of cooking pits represent different functions?

What did they actually use the cooking pits for?

- Food – what kind of food (special kinds?) and for how many (large amounts?)
- Beer – special kinds? only here?
- Fire/steam/smoke – illusions in connection with other activities (religious events?)
- Steam/sweat huts?
- Did they just burn or bury burned stones? (Do you really need 200 kg of hot stones to make a sunday roast?)

Is there differences in the choice of fire wood? (And what does it imply if there is?)

What did the landscape look like?

When/what time of year were the cooking pits used?

Gathering/meeting places but in what sence, for whom/how many/how long?

What was the function/role of the different looking cooking pit systems?

What relation do they have to settlements, depositions, graves?