



Cooking Pits below drift sand



Nordjyske
Museer
Vi giver historien liv

Karen Povlsen, museumsinspektør, Nordjyske Museer

Hammer

by Aalborg,

Northern Jutland

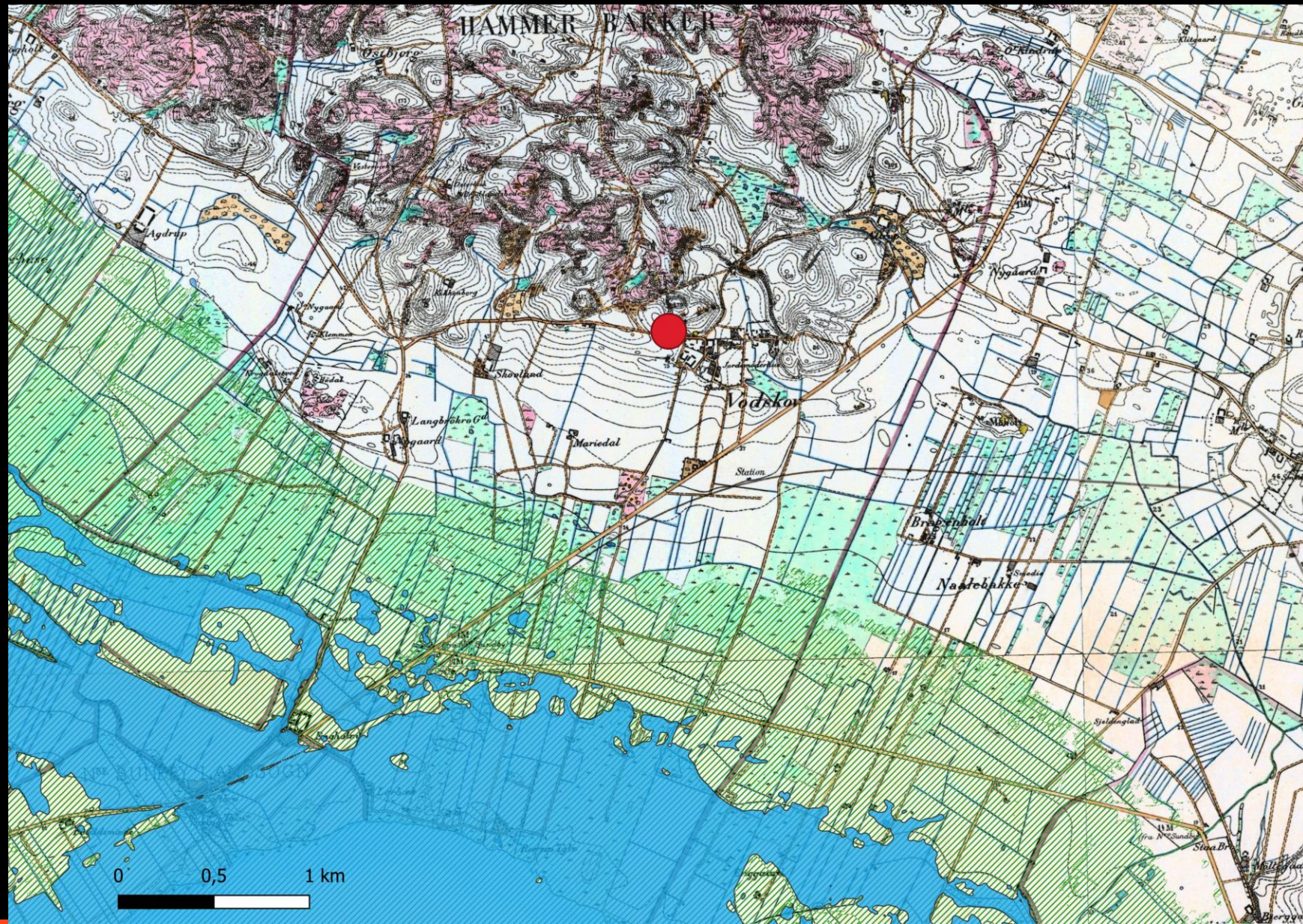
ÅHM 7982

120605-116

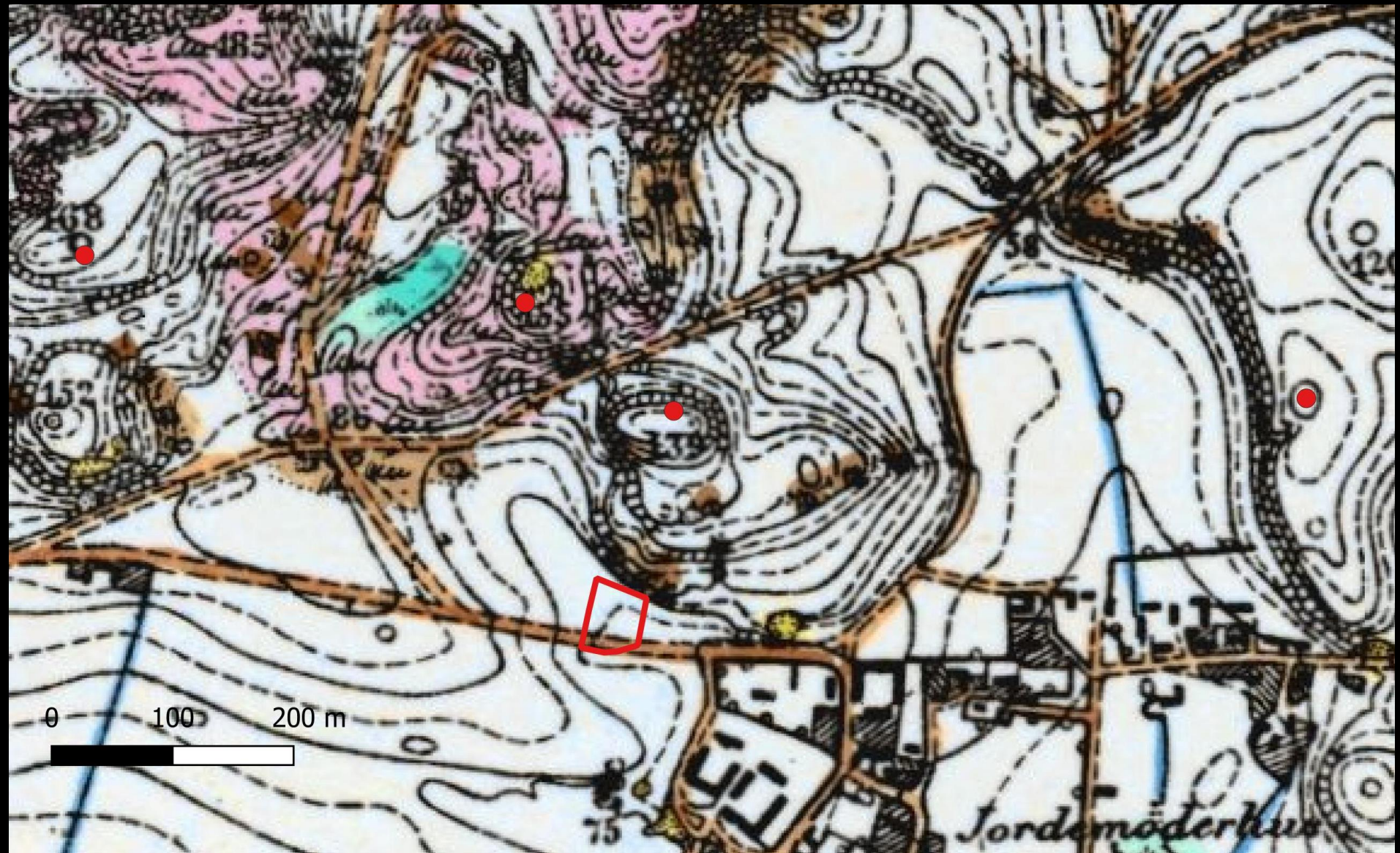


Nordjyske
Museer
Vi giver historien liv

Red dot: The excavation
Blue: Estimated sea level
c. 500 BC
Green: Estimated max of
the Littorina Sea –
meadows and marsh in
the bronze and iron ages



Red square: The excavation area
Red dots: Burial mounds





Nordjyske
Museer
Vi giver historien liv

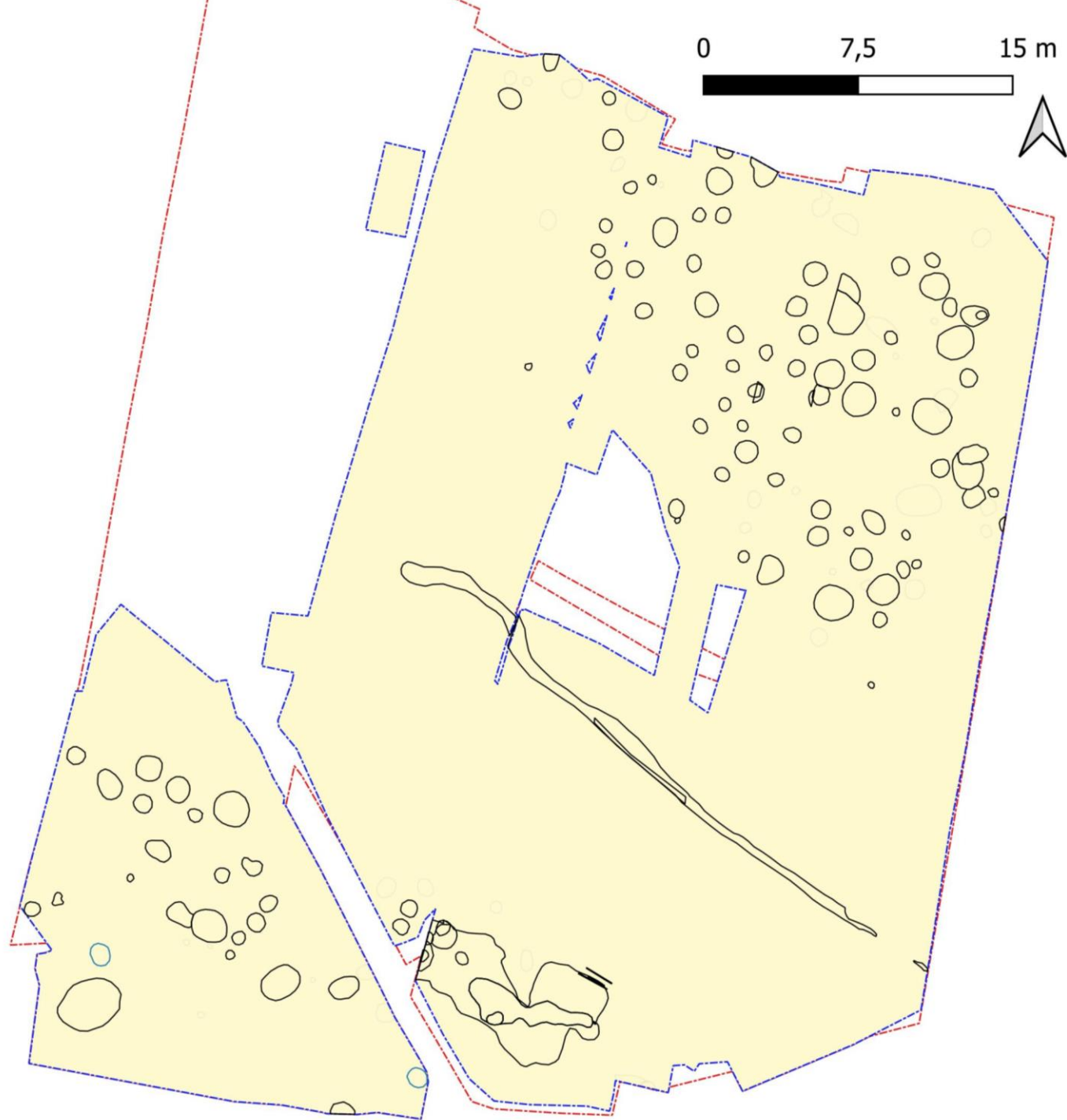
Ard marks above driftsand©Nordjyske Museer





Ard marks below and above the drift sand horizon
©Nordjyske Museer





Left: Site map with the cooking pits found below driftsand. Between the two clusters was a hollow in the terrain. Right: The north eastern most part of the excavation at the level of the cooking pits ©Nordjyske Museer







Nordjyske
Museer
Vi giver historien liv

Pits were from almost 1 m deep to less than 10 cm deep ©Nordjyske Museer

ÅHM 7982
A167



ÅHM 7982
A136





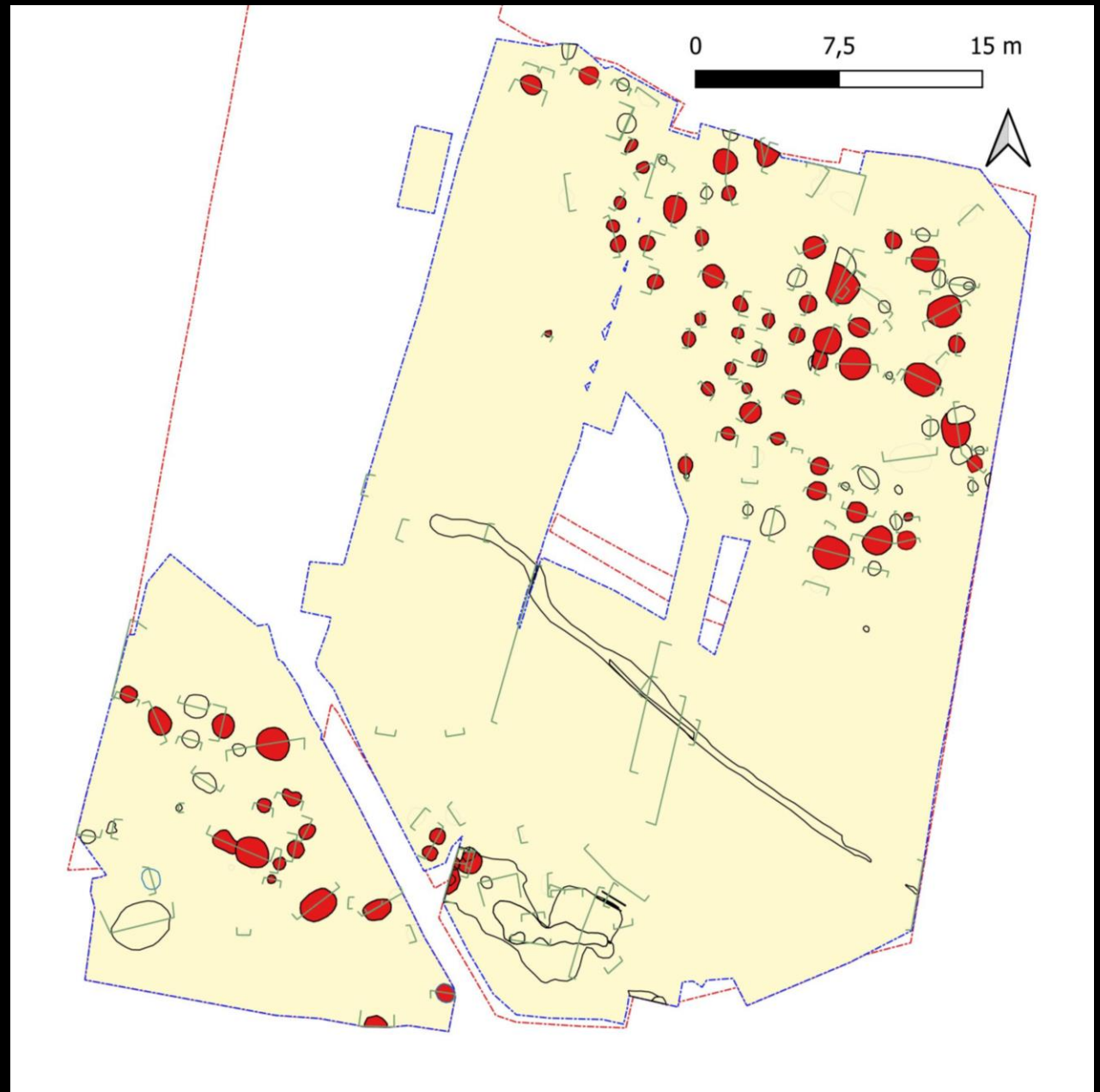
Nordjyske
Museer
Vi giver historien liv



Cooking pit with large parts of a vessel just above the dark layer
©Nordjyske Museer

Sampling

- Samples for makrofossil analysis (red pits on the map)
- Stone samples (14 pits)
 - to examine whether the stones were reused from another context
 - to look for crusts
 - quantify weight
- Pollen in the hollow
- OSL of the different layers







Nordjyske
Museer
Vi giver historien liv

Stratigraphy in the hollow. The dark peat layer was sampled for pollen ©Nordjyske Museer





Thank you!



Nordjyske
Museer
Vi giver historien liv

Karen Povlsen, museumsinspektør, Nordjyske Museer